

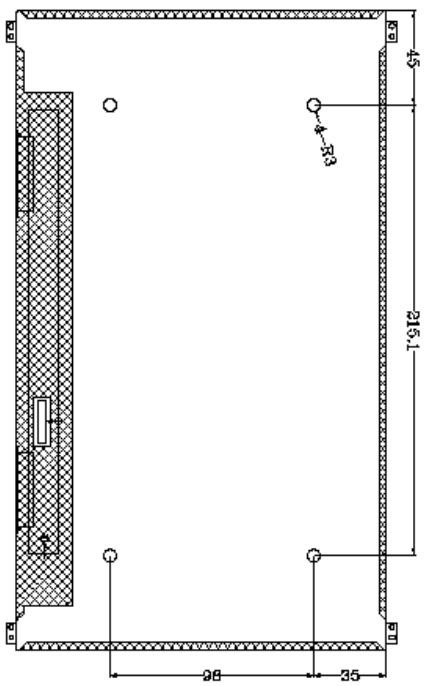
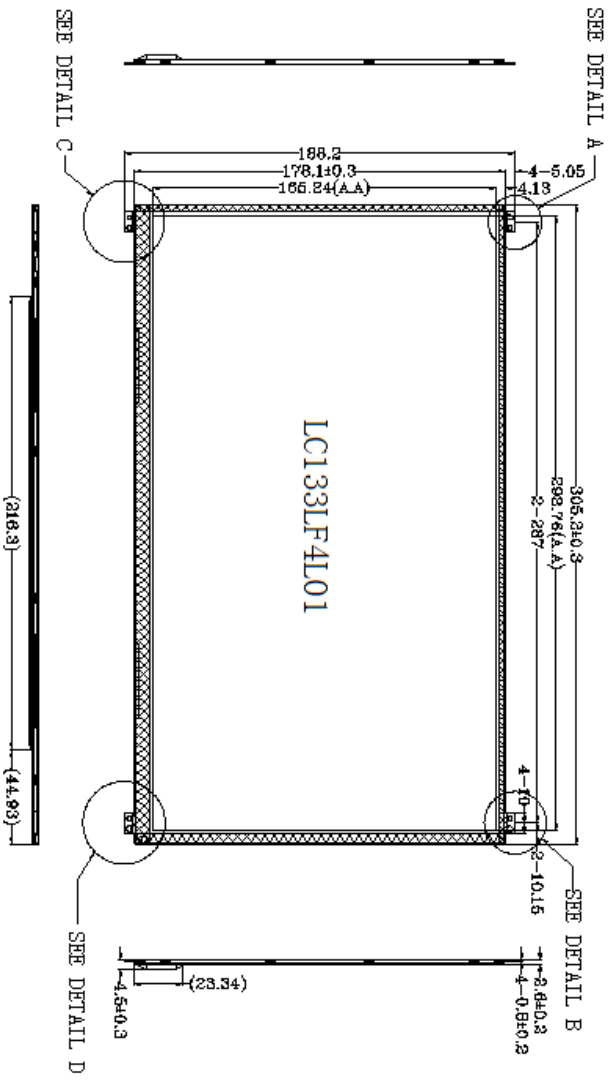
Outline Drawing

客户确认签名
Customer approved

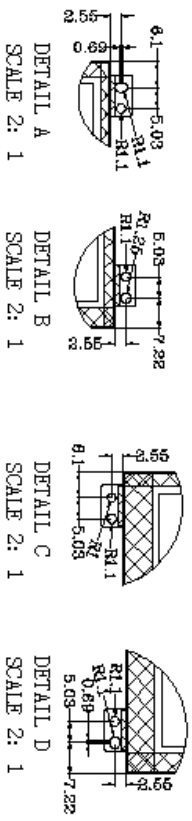
日期
Date



VER	REVISION RECORD	Date	Name
A	NEW RELEASE	2016/10/22	ZW
B			
C			

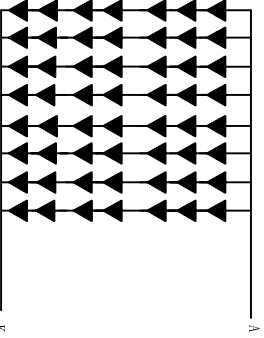


PIN	NAME
1	NC
2	H GND
3	LANE1 N
4	LANE1 P
5	H GND
6	LANE0 N
7	LANE0 P
8	H GND
9	AUX CH P
10	AUX CH N
11	H GND
12	LCD VDD
13	LCD VDD
14	NC
15	LCD GND
16	LCD GND
17	HPD
18	LED-
19	LED-
20	LED-
21	LED+ PWM
22	LED+ PWM
23	LED+ PWM
24	NC
25	NC
26	LED-
27	LED+
28	LED+
29	LED+
30	NC



NOTE

- 1.Lcd Display Type: 13.3TFT, 1920*1080,IPS
- 2.Polarzier Mode:Transmissive, normally BLACK
- 3.Viewing Direction: ALL
- 4.Logic Supply Voltage: 3.0V
- 5.Control IC:
- 6.Backlight: White(7*8 Led),ILed=160mA,Vled=21.5V
- 7.Backlight brightness and uniformity: 250cd/m2, >=80%
- 8.Operating Temp:-10 TO 60°C
- 9.Storage Temp: -20 TO 70°C
- 10.Connector: FPC
- 11.Ultiority Tolerance:±0.2MM



		<h3>深圳市隼目显示技术有限公司</h3>		LCM TYPE 13.3吋 TFT Material No.	
Dwg: CUSTOMER		E.V.T Shenzhen Eagle Vision Display Technology Co., Ltd		SCALE: 1:1	
Check: MODULE		LMT133AIN30E01		SHEET 1 OF 1	
Visual Angle					