

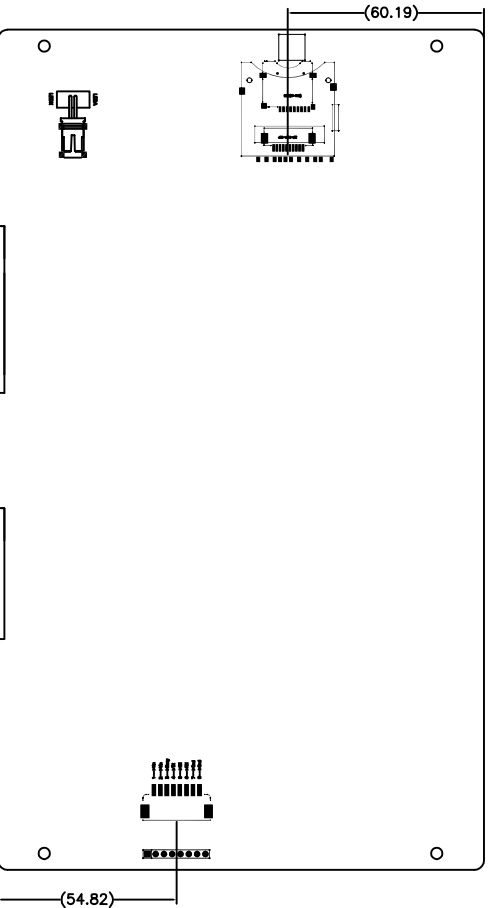
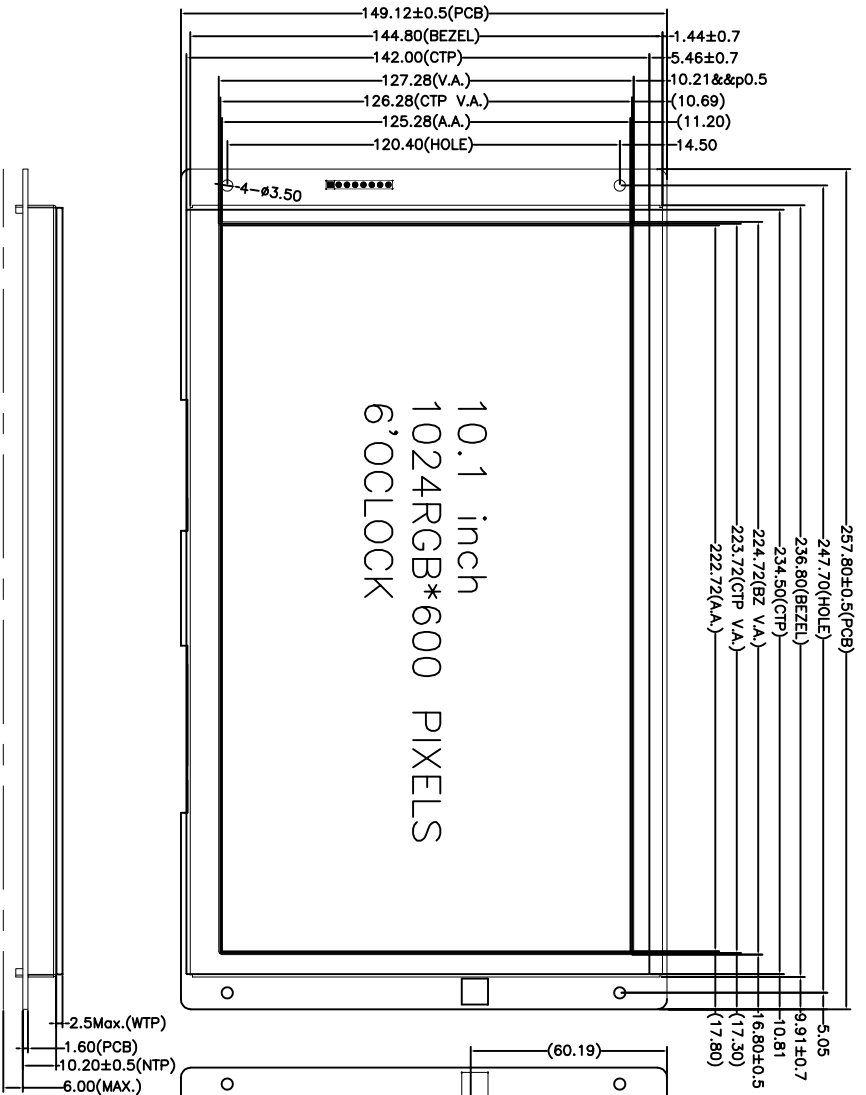
Outline Drawing

客户确认签名
Customer approved

日期
Date



VER	REVISION RECORD	Date	Name
A	NEW RELEASE	2020/05/18	zxp
B			
C			



IN1/IN2:	Pin No.	SYMBOL	Description
	1~2	Vin	Power supply input
	3	RX	RS232 data input
	4	TX	RS232 data output
	5	485A	RS485A
	6	485B	RS485B
	7~8	Gnd	Ground

NOTE

- 1.Lcd Display Type: 10.1' SMART UART TFT LCM,1024*600
- 2.Polarzier Mode:Transmissive, normally white
- 3.Viewing Direction: 6 O'CLOCK
- 4.Logic Supply Voltage: 6.0V
- 5.Control IC:
- 6.Backlight: White
- 7.Backlight brightness and uniformity: 280cd/m2, >=80%
- 8.Operating Temp: -20 TO 70°C
- 9.Storage Temp: -30 TO 80°C
- 10.Connector:
- 11.Ulteriorly Tolerance:±0.2MM

NO TP: LMT101R8NT02
 CTP: LMT101R8CT02
 RTP: LMT101R8RT02



深圳市集目显示技术有限公司

Shenzhen Eagle Vision Display Technology Co., Ltd

LCM TYPE
10.1吋串口TFT
Material No.

Dwg:	CUSTOMER		
Check:	MODULE	LMT101R8NT02	SCALE: 1:1

Visual Angle		SHEET 1 OF 1
--------------	--	--------------