

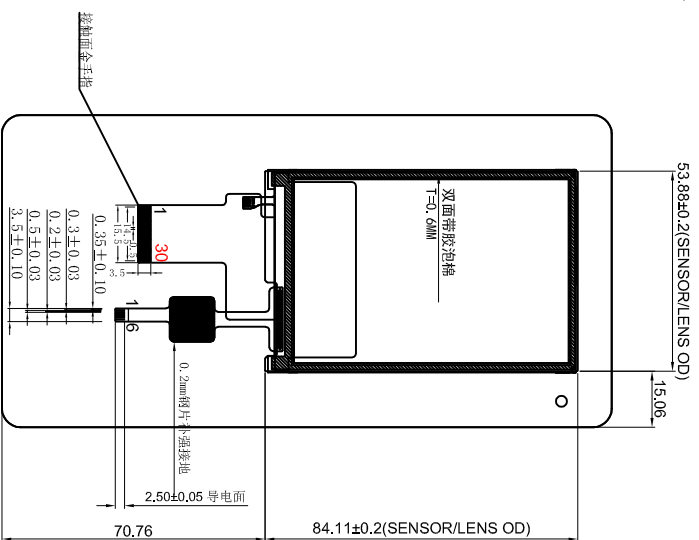
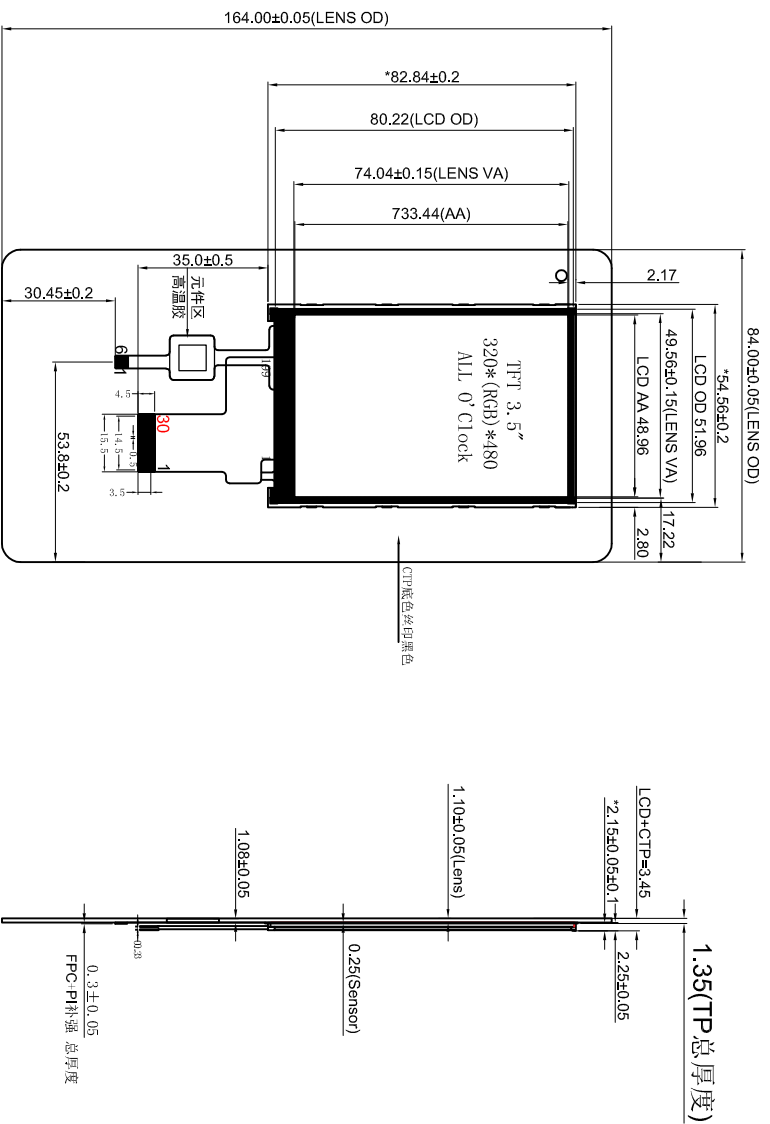
Outline Drawing

客户确认签名
Customer approved

日期
Date



VER	REVISION RECORD	Date	Name
A	NEW RELEASE	2022/01/15	ZHMO
B			
C			

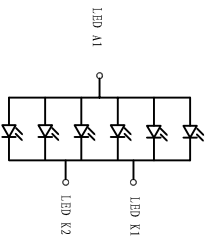


ASPI

PIN	Symbol
1	GND
2	LED-A
3	NC
4	I0VCC
5	NC
6	LEDK
7~12	NC
13	SDA
14	SCL
15	NC
16	NC
17	IM0/NC
18	IM1/NC
19	CS
20	RS
21	RST
22	SD0
23~26	NC
27	VDD
28	GND
29	NC
30	GND

NOTE

1. Lcd Display Type: 3.5TFT(CTC), 320*480
2. Polarizer Mode: Transmissive, normally black
3. Viewing Direction: ALL
4. Logic Supply Voltage: 3.0V
5. Control IC: ST7796S
6. Backlight: White(6*1 Led), I_{led}=120mA, V_{led}=3.1V
7. Backlight brightness and uniformity: 280cd/m², >=85% (With CTP)
8. Operating Temp: -20 TO 70
9. Storage Temp: -30 TO 80 °C
10. Connector: FPC
11. Ulteriorly Tolerance: ±0.2MM



CTP Definition

Pin NO	Definition
1	VDD 3.3
2	RST
3	INT
4	SCL 3.3
5	SDA 3.3
6	GND

- 技术参数:
1. Cover GLASS+ITO FILM+PPC
 - ITO FILM: 0.25mm
 - Cover GLASS: 0.7mm
 - 总厚=0.95mm±0.1mm (不包含背胶)
 - IC: PT6336U
 - 透光率: >=85%
 - 表面硬度: >=6H
 - 工作环境: -20°C~+70°C, <=90%RH
 - 储存环境: -30°C~+80°C, <=90%RH
 - 跌落要求: 64克钢球, 60公分, 二次不破。
 - 未注尺寸公差按±0.2mm。

深圳市隼目显示技术有限公司

Shenzhen Eagle Vision Display Technology Co., Ltd



E.V.T

Dwg:	CUSTOMER	LCM TYPE	3.5 In ² TFT+CTP
Check:	MODULE	Material No.	
Dim:	MM	SCALE: 1:1	
	Visual Angle	SHEET 1 OF 1	